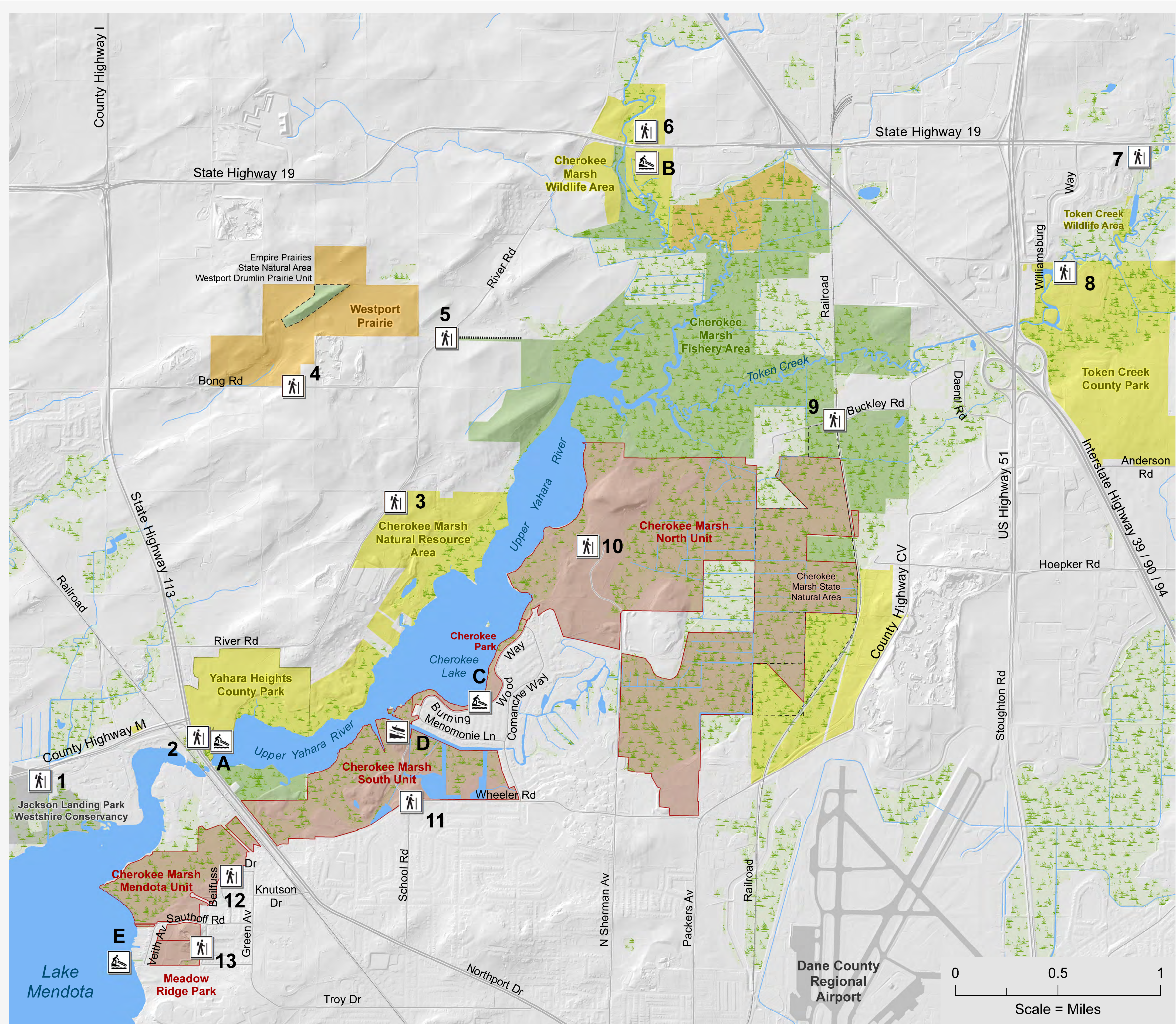


# Explore Cherokee Marsh Public Lands



Map Prepared by Douglas Norgord, Geographic Techniques LLC

### ACCESS POINTS

<b>1 Jackson Landing/Westshire Conservancy</b> 5485 Willow Rd, Westport 1 mile of trails	<b>10 Cherokee Marsh Conservation Park North Unit</b> 5098 & 6098 N Sherman Ave, Madison 3.8 miles of trails
<b>2 Cherokee Marsh Natural Resource Area West Trailhead &amp; Yahara Heights County Park</b> Catfish Ct, Westport 5.2 miles of trails	<b>11 Cherokee Marsh Conservation Park South Unit</b> 802 Wheeler Rd, Madison 3.6 miles of trails
<b>3 Cherokee Marsh Natural Resource Area East Trailhead</b> 5720 River Rd, Westport 5.2 miles of trails	<b>12 Cherokee Marsh Conservation Park Mendota Unit</b> 4338 Beilfuss Dr, Madison Enter at Westport Meadows Park 0.6 mile of trails
<b>4 Westport Prairie</b> 5208 Bong Rd, Westport 0.5 mile of trails	<b>13 Meadow Ridge Conservation Park</b> 4002 Meadow Valley Dr, Madison 0.7 mile of trails
<b>5 Cherokee Marsh Fishery Area West Access (DNR)</b> 5880 River Rd, Westport 0.75 mile access trail to shoreline	<b>BOAT LAUNCHES</b>
<b>6 Cherokee Marsh Wildlife Area</b> 4730 State Highway 19, DeForest No maintained trails	<b>A Yahara Heights</b> Canoe/kayak landing, carry-in Catfish Ct, Westport
<b>7 Token Creek Wildlife Area</b> 4073 State Highway 19, DeForest 0.2 mile walk-in access, no maintained trails	<b>B Cherokee Marsh Wildlife Area</b> Canoe/kayak landing, carry-in 4641 Liuna Way, DeForest
<b>8 Token Creek County Park</b> 6200 Williamsburg Way, Burke 4.6 miles of trails	<b>C Cherokee Park</b> Canoe/kayak landing, carry-in 1000 Burning Wood Way, Madison
<b>9 Cherokee Marsh Fishery Area East Access (DNR)</b> 4494 Buckley Rd, Burke No maintained trails	<b>D School Road boat landing</b> 802 Wheeler Rd, Madison
	<b>E Veith Avenue</b> Canoe/kayak landing, carry-in 4106 Veith Ave, Madison

Trailhead	Dane County	Road
Boat Ramp	WI Dept. of Natural Resources	Railroad
Canoe/Kayak Carry-In	State Natural Area	Water Body
Access Trail	Groundswell Conservancy	Wetland
	Westport	
	Madison Parks	

### Dogs

**Madison Conservation Parks**  
No dogs (Sites 10, 11, 12, 13)

**Dane County**  
Permit required. Leashed dogs (sites 2, 3, 6, 7, 8), off-leash dog parks (sites 2, 8)

**DNR**  
Dogs allowed, must be on leash April 15-July 31 (Sites 5, 9)

**Groundswell Conservancy**  
Leashed dogs allowed, hunting dogs off leash in regulated hunting seasons (site 4)

**Westport**  
Leashed dogs (site 1)

### Hunting

**Madison Conservation Parks**  
No hunting (sites 10, 11, 12, 13)

**Dane County**  
By permit in Wildlife Areas (sites 6, 7), archery hunting by permit in some Parks and Natural Resource Areas (sites 2, 3, 8)

**DNR**  
Permitted (Sites 5, 9)

**Groundswell Conservancy**  
Permitted (site 4)

**Westport**  
No hunting (site 1)

*Review rules with the respective agencies before visiting to hunt.*

This display was funded by the Friends of Cherokee Marsh and a grant from Dane County Parks